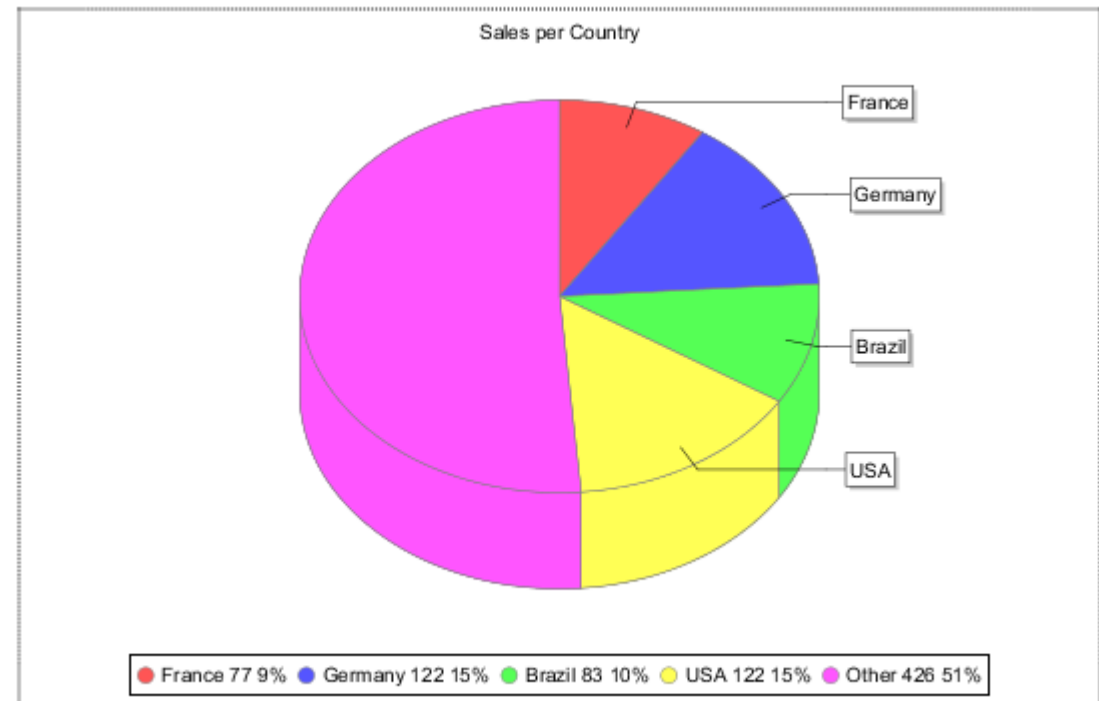
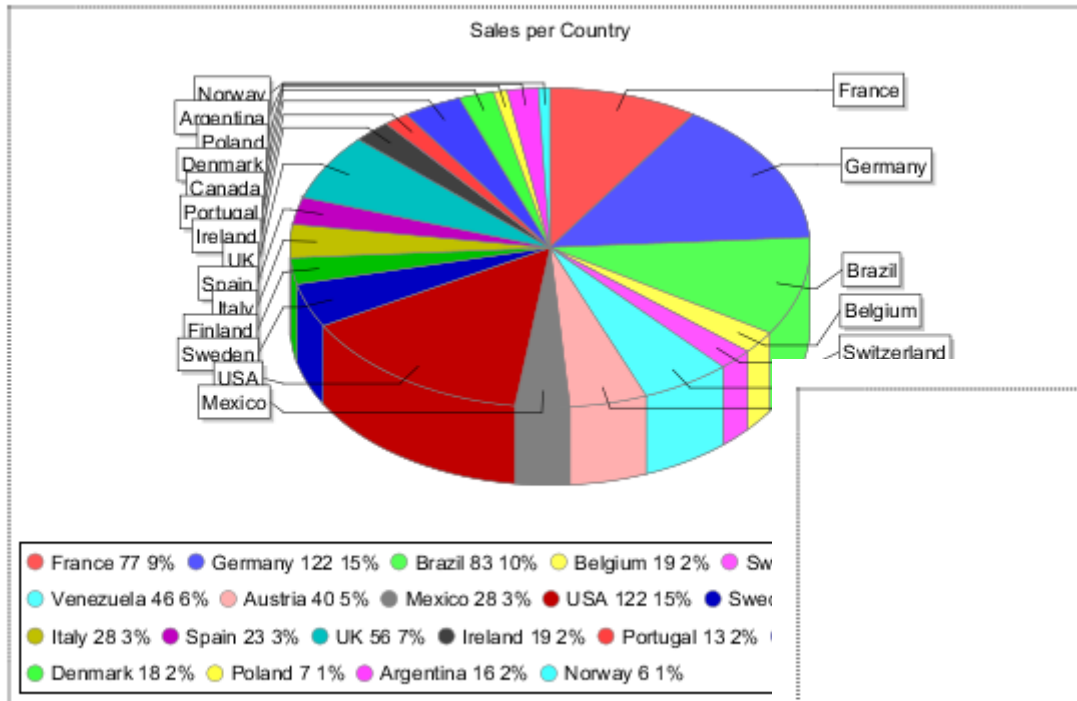


# Πέντε JasperSoft Reports

Πως σχεδιάζονται...

# 1. 20 ή 5;



# Χρησιμοποιούμε το Sample DB

Dataset and Query Dialog

Sample DB

Query Java Bean

Language sql

INFORMATION\_SCHEMA  
PUBLIC (CURRENT)  
SYSTEM\_LOBS

```
1 select count(*) as orders, shipcountry
2 from orders
3 group by shipcountry
```

Texts Outline Diagram

Field Name	Class Type
ORDERS	java.lang.Long
SHIPCOUNTRY	java.lang.String

# Max slices...

Chart Wizard

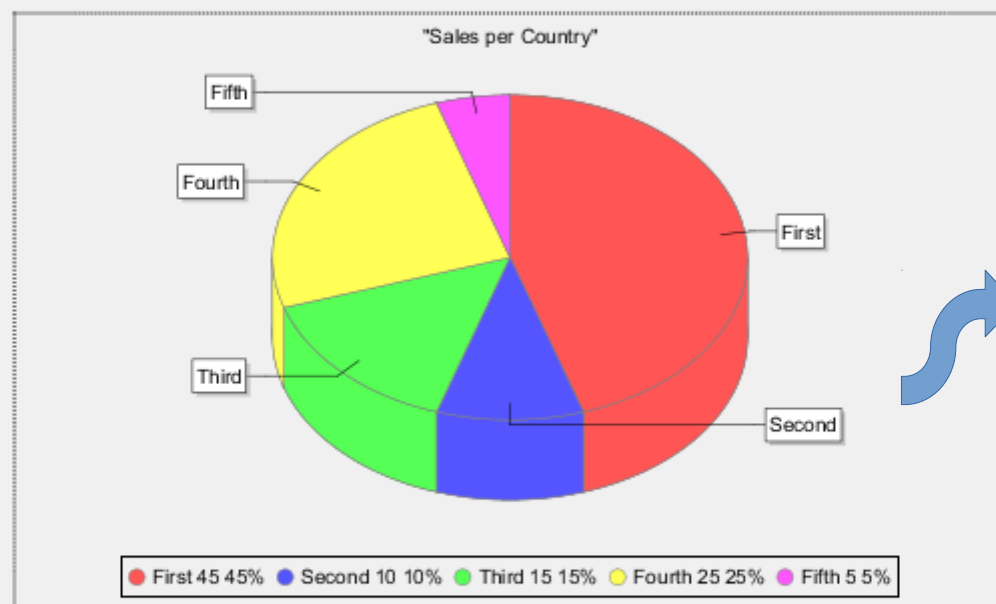


## Chart Data Configuration

Configure how data are used by your chart

Series  ...

Value  ...  
Label  ...



Key  ...

Min slice percentage   
Max slices to show



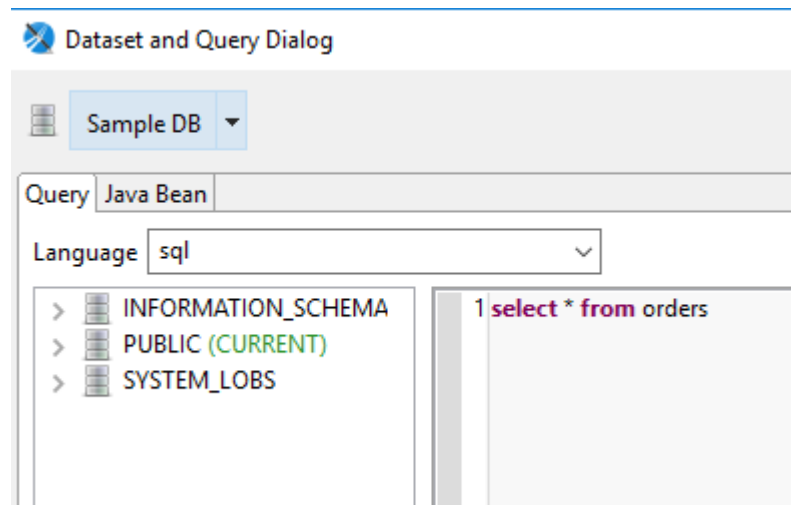
Dataset

Dataset  ...

Increment on  ...  
Reset on

## 2. Spider Chart

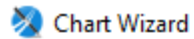
1. select \* from orders
2. Move all the fields into the right box. Click Next and Finish.
3. Delete all bands except Title and Summary.
4. Drag a Static Text element into the title bar, and name your report something like “Employee Orders by Month and Country”.
5. Enlarge the Summary band to 350 pixels by changing the Height entry in the Band Properties view.



# Filter Expression

```
($F{SHIPCOUNTRY}.startsWith("N") || $F{SHIPCOUNTRY}.startsWith("M") ||  
$F{SHIPCOUNTRY}.startsWith("U") || $F{SHIPCOUNTRY}.startsWith("I") ) ||  
$F{SHIPCOUNTRY}.startsWith("A") &&($F{SHIPNAME}.startsWith("M") ||  
$F{SHIPNAME}.startsWith("A") || $F{SHIPNAME}.startsWith("G") )
```

# Chart Wizard



## Chart Data Configuration

Configure how data are used by your chart

Series  ...

Value  ...

Legend:  
● Series 1 (Red)  
● Series 2 (Blue)  
● Series 3 (Green)

Category  ...

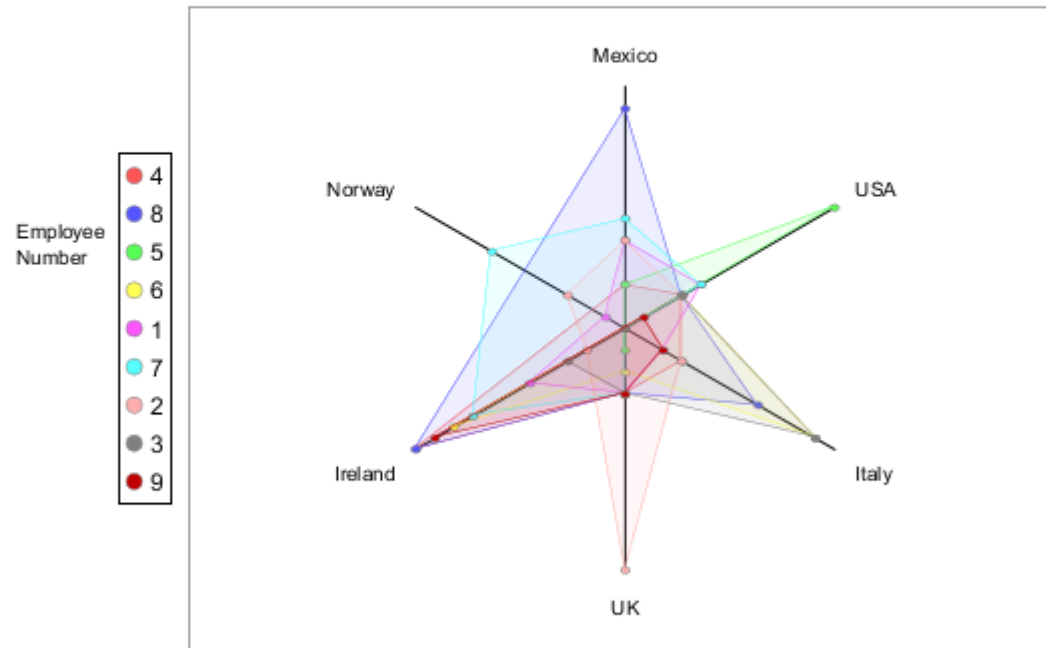
Label

Dataset  ...

Increment on  ...

Reset on

# Employee Orders by Month and Country

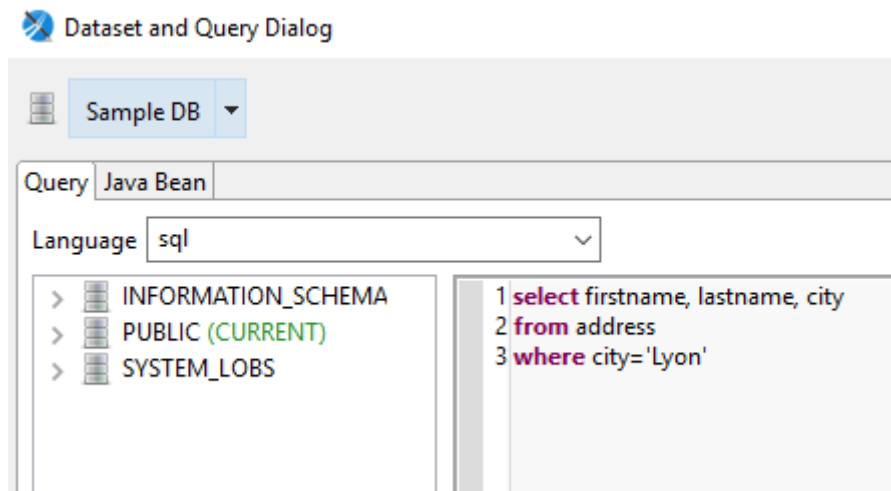


# 3. Χρήση Map

Lyon	
FIRSTNAME	LASTNAMEITY
Anne	Miller
Laura	Ott
Susanne	White
Andrew	Heiniger



# Dataset



# Map

Composite Elements

- # Page Number
- Σ Total Pages
- 📅 Current Date
- 🕒 Time
- % Percentage
- ### Page X of Y

Properties Problems

Map: Map

Appearance Map Authentication Markers

Latitude

Longitude

Address SF{CITY}

Zoom 8

Map Type roadmap

Language

Map Scale 1

Evaluation Time Now

Image Type png

On Error Type Error

Edit Map

Page Header SF{CITY}

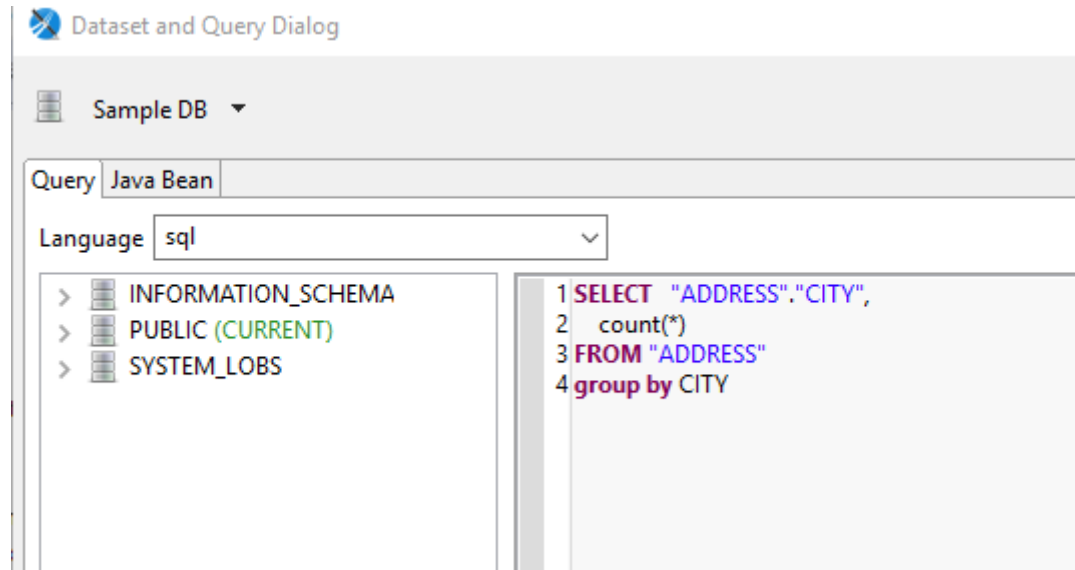
Column Header

Detail 1

Summary

Metric	Value
Compilation Time	0.1 sec
Render Time	0.827 sec
Total Execution Time	1.046 sec
Start Time	0 sec
Pages	1 pages

# 4. Πολλά Maps



# Map

Χάρτες πόλεων που υπάρχουν πελάτες

Page Header

City	Number of Customers
#{CITY}	#{C2}

new java.util.Date()

#{PAGE\_NUMBER}

Text Field  
label Static Text

Composite Elements

- # Page Number
- Σ Total Pages
- 31 Current Date

Properties Problems

**Map: Map** Search

Appearance Map Authentication

Latitude

Longitude

Address

Zoom

Map Type

Language

Map Scale

Evaluation Time

Image Type

On Error Type

Edit Map

Sign Source Preview

Report State

Console Errors (0) Statistics

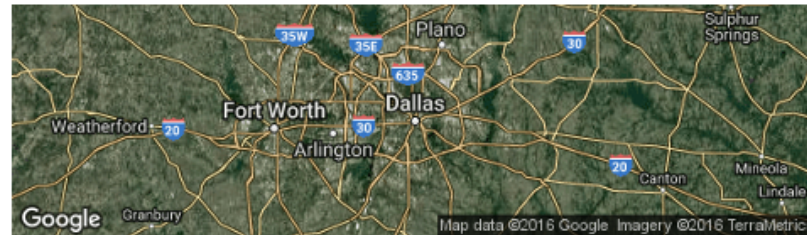
Compilation Time	0.465 sec
Filling Time	3.539 sec
Report Execution Time	4.032 sec
Export Time	0 sec
Total Pages	4 pages
Processed Records Count	12 records

# Preview

## Χάρτες πόλεων που υπάρχουν πελάτες

City Number of Customers

Dallas 9



Olten 5



Lyon 4



# 5. QR-code

## Παράδειγμα εκτύπωσης QR code

Όνομα ιστοσελίδας	Σύνδεσμος	Τύπος
eshop	<a href="http://www.eshop.gr">http://www.eshop.gr</a>	ecommerce



1

Κουτί Πανδώρας	<a href="http://www.koutipandoras.gr">http://www.koutipandoras.gr</a>	news
----------------	---	------



2

In ΔΟΛ	<a href="http://www.in.gr">http://www.in.gr</a>	news
--------	---	------



3

# Παράδειγμα εκτύπωσης

Title

Page Header

Όνομα ιστοσελίδας	Σύνδεσμος	Τύπος
<code>#{name_1}</code>	<code>#{link_1}</code>	<code>#{type_1}</code>

Column Header

Detail 1

Page Footer

Summary

List

Composite Elements

Page Number

Total Pages

Current Date

Time

Properties

Problems

QRCode: Barcode

Appearance

Barcode

Adva

Barcode

Code Expression `#{link_1}`

Evaluation Time Now